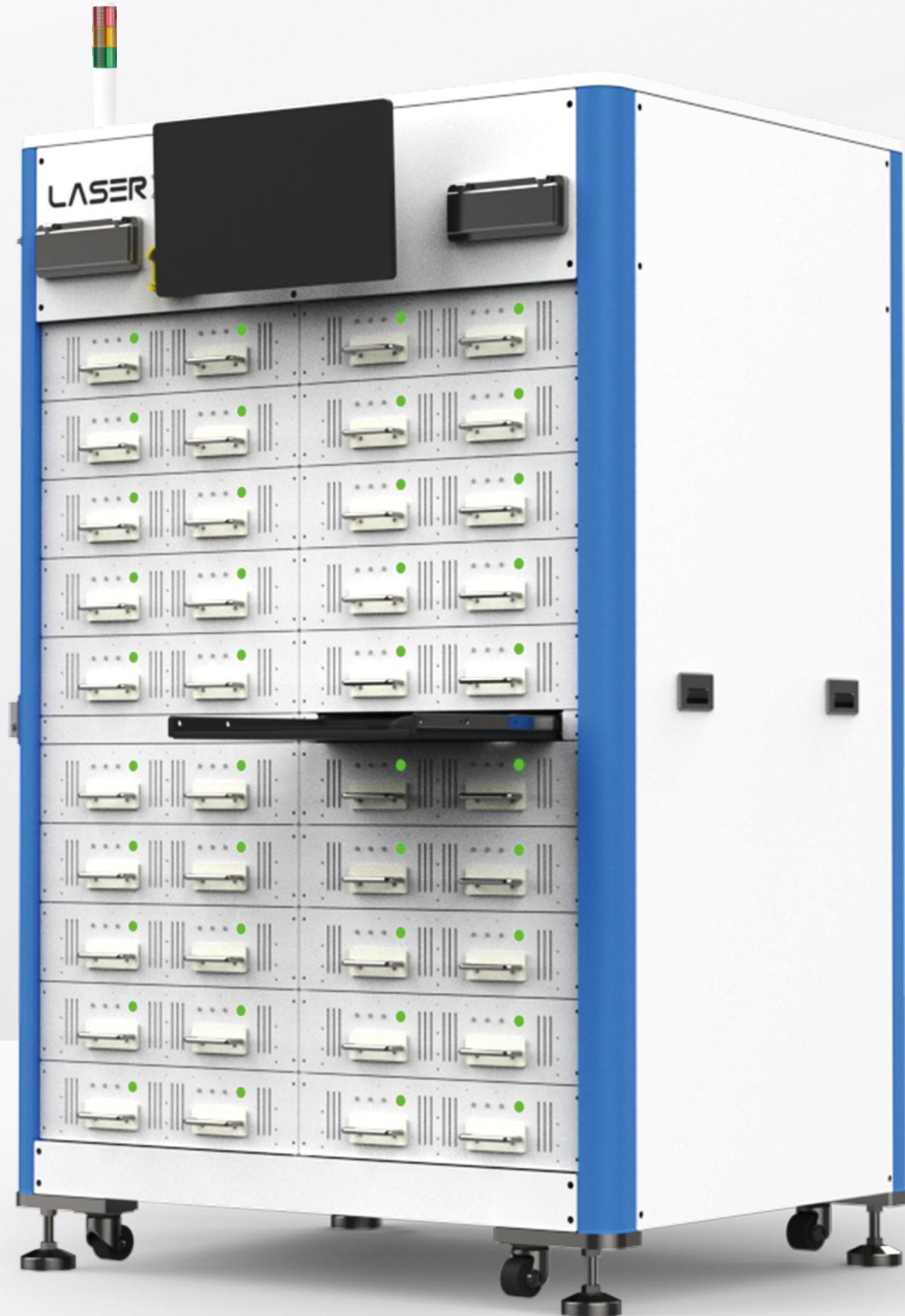


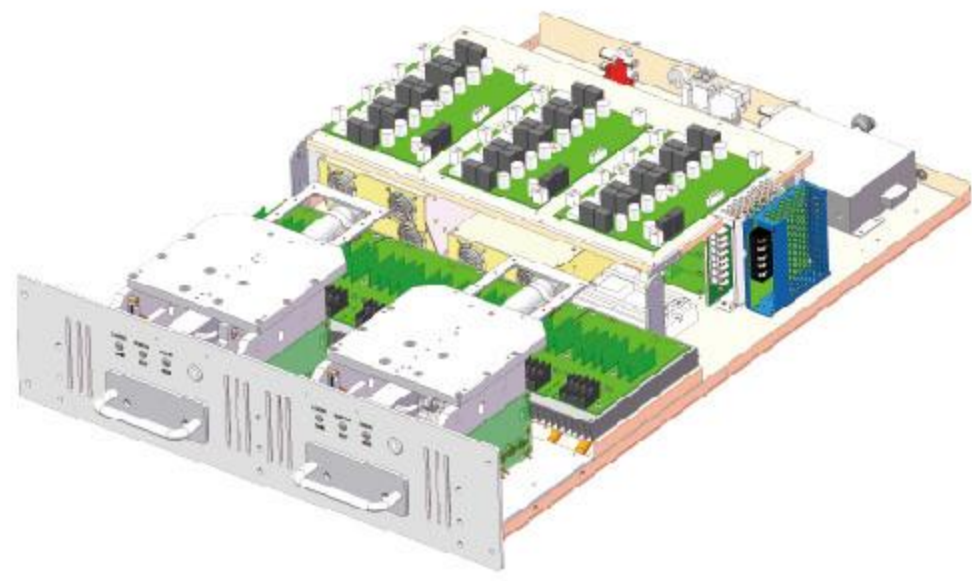
LASER X



High Power COS Burn-in Equipment

Product Features

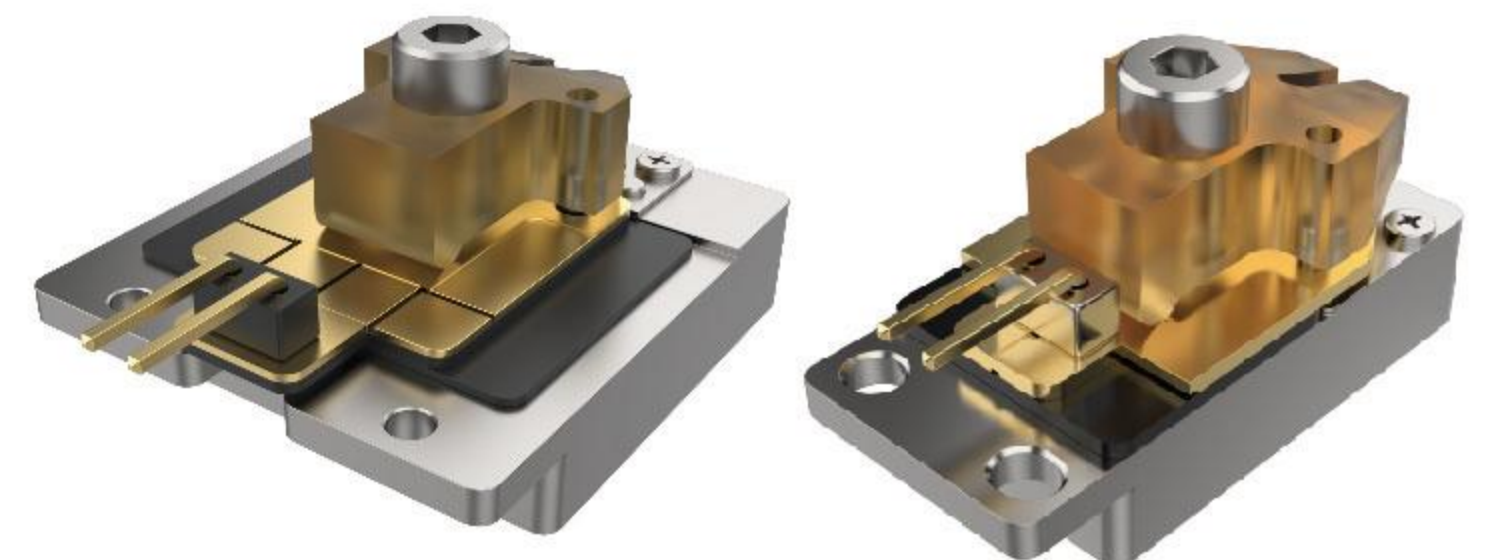
- 20 burn-in power units, support up to 640 COS (might be affected by COS power rating)
- Support in-sute optical power monitoring
- 2 burn-in cassettes supported by each power unit, burn-in cassette can be loaded offline
- Support pump and industrial laser COS



Burn-in power



Burn-in cassette



Burn-in fixture

Performance Parameter

Class	Project	Metric
Power features	Output mode	ACC constant current (control cathode)
	Output capability	DC 3A/5V DC 6A/5V DC 30A/5V DC 50A/5V
	Current accuracy	0.5%±5mA (@6A) 0.5%±30mA (@30A)
	Current stability	< 1%@24hrs
Temperature characteristic	Control	By TEC
	Cooling water temperature	20~28°C
	Range	20~100°C
	Uniformity	±2°C (May affected by current rating)
	Stability	±0.5°C